

All Terrain Railway Vehicle (ATRV) Utility vehicle and incident response



The Moonbuggy ATRV with its six wheel drive and high maneuverability can be used to access areas inaccessible to standard vehicles. Designed to cross rough terrain and able to mount tracks at any point, not just at a level crossing. The ATRV makes an ideal incident response vehicle able to transport up to 5 personnel with equipment when fitted with side seats.

With choices of petrol, diesel or hybrid Electric the ATRV can be used to access incidents in tunnels and other remote and difficult to reach areas.

Applications:

- Rail Access to incidents
- Tunnel access
- Casualty recovery
- Equipment / Personnel transport
- Survey / Maintenance vehicle
- Security searches

Features:

- Able to mount rails at any point
- Petrol, Diesel or Electric hybrid available
- Remote operated version available
- All steel construction.
- minimum maintenance.

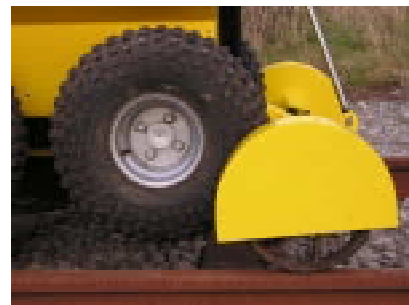


POWERPLANT

- Power Source: 12 HP Petrol Engine. Diesel and electric versions as options.
- Speed Control: Variable speed control.
- Transmission: Hydrostatic drive to six wheels.

PERFORMANCE

- Ground Speed: Max Speed: 10 mph
Rail Speed: 4 mph
Higher speeds available
- Steering: 6 wheel drive skid steer.
- Range: 2 hrs on standard tank, larger capacity tanks available.
- Turning circle: Zero (rotate on own axis).



Designed and Manufactured by: **Smith Engineering (GB) Ltd**
Solway Industrial Estate
Maryport, Cumbria
CA15 8NF, United Kingdom

T: +44 (0)1900 815 831
F: +44 (0)1900 815 553
E: r.smith@moonbuggy.com
W: www.moonbuggy.com